

Instituto de Psicologia Cognitiva, Desenvolvimento Vocacional e Social (IPCDVS)

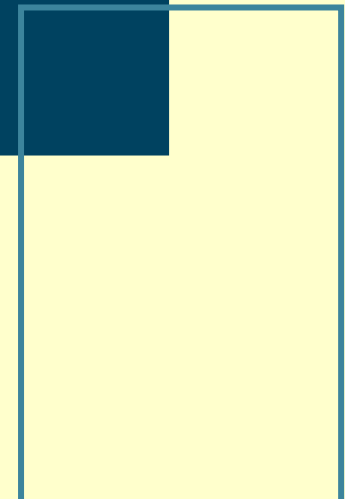
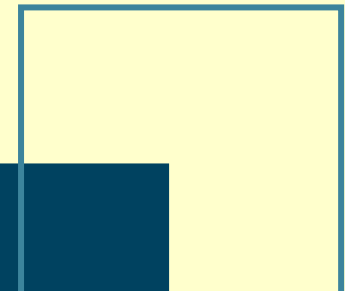
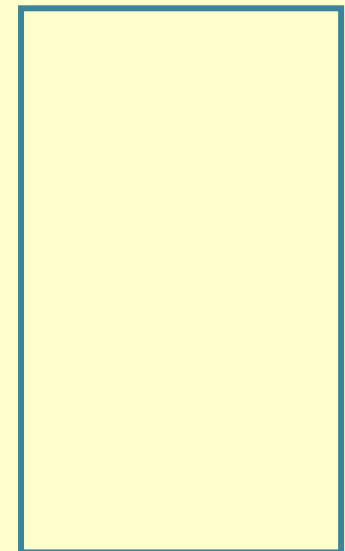
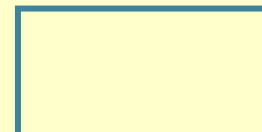
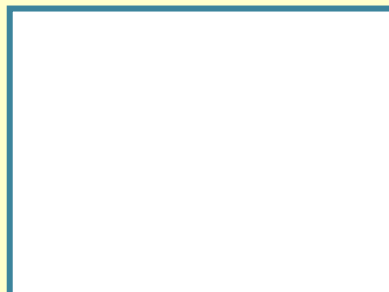
Institute of Cognitive Psychology, Vocational and Social Development

BRIEF DESCRIPTION

&

HIGHLIGHTS

Scientific Coordinator: Eduardo J. R. Santos, Ph. D.



IPCDVS: BRIEF DESCRIPTION & HIGHLIGHTS



IPCDVS is a Research and Development Unit of the University of Coimbra, hosted at the Faculty of Psychology and Educational Sciences (FPCE UC), mainly sponsored by the Science and Technology Foundation (FCT).

FCT/2004-2007 *Good*



FOUNDATION



The *Instituto de Psicologia Cognitiva, Desenvolvimento Vocacional e Social (IPCVDVS)* is a Research and Development unit of the University of Coimbra, founded in 1994, and integrated within the Instituto de Investigação Interdisciplinar (III) of this University. The III's recognizes IPCVDVS as the only R&D unit with competency within its Scientific Council to perform evaluation tasks of researchers and research projects in the Psychology domain. This unit integrates today a large team of national and international researchers from different public and private institutions.

Since its foundation until today, at IPCVDVS a transdisciplinary dynamic is being stimulated, where core fields of psychology are integrated, as follows: experimental, cognitive, educational, clinical and health, social, and counseling.

FOUNDATION



The demands of a new field of knowledge and practice in our country since 1974 were the main reasons to adopt a “scientist-practitioner” paradigm of organization of the research, where we tried to harmonize the diversity of training of our incoming members and founders, the different “calls” from society, and the need to specialize and converge in a common scientific platform, in what concerns epistemological, conceptual and methodological tools.

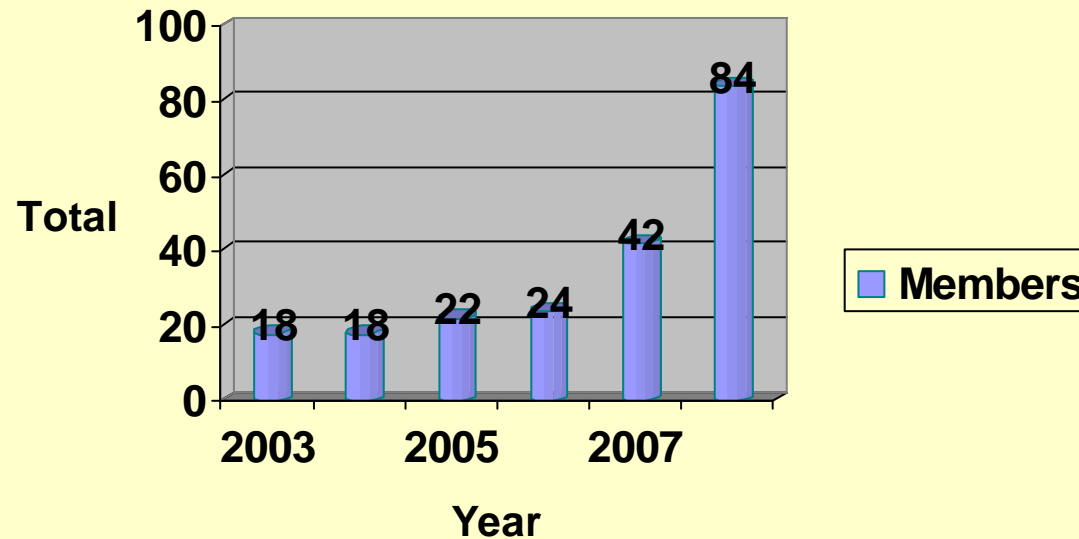
Today we have different research groups, coherently structured, and articulated between them in what regards the goals of building scientific knowledge in the psychosocial domain.

INTERNAL ORGANIZATION



- ❑ Members: 84 (50 Ph. D. Level – 59,5 %)
- ❑ Ph. D. Age mean: 48,76 years ; sd: 8,728
- ❑ All members: 38,0 % men / 62,0 % women
- ❑ All members Professional settings: 82,3 % at University; 17,7 % at other places

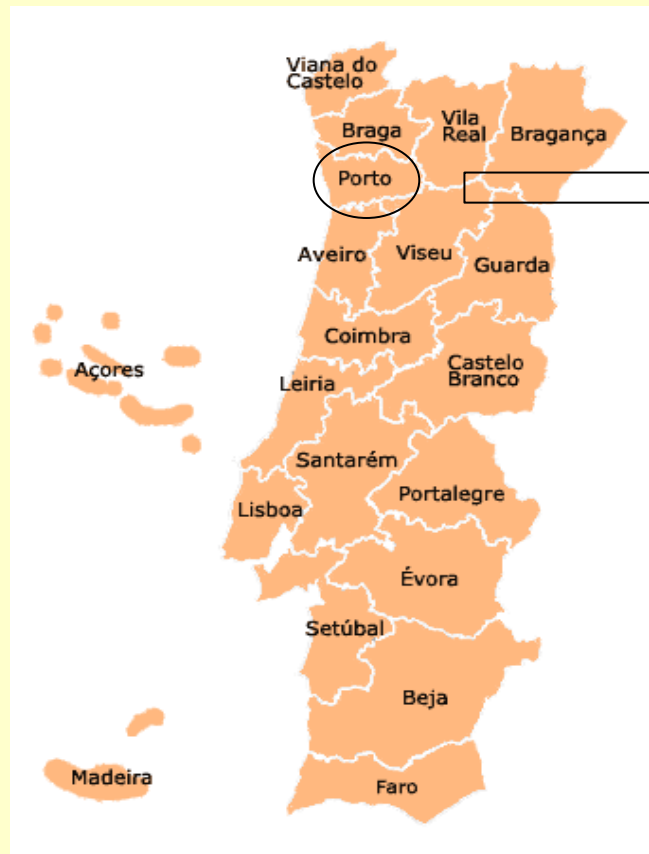
IPCDVS Evolution



INTERNAL ORGANIZATION



□ Geographical distribution of the IPCDVS members



1 Member
Hospital Magalhães Lemos

INTERNAL ORGANIZATION



□ Geographical distribution of the IPCDVS members



2 Members

Associação Portuguesa de Paralisia Cerebral (NRV)
Universidade Católica Portuguesa (Pólo de Visu)

INTERNAL ORGANIZATION



□ Geographical distribution of the IPCDVS members



50 Members
Escola Superior de Tecnologia da Saúde
Faculdade de Medicina da UC
Faculdade de Psicologia e de Ciências da Educação da UC
Instituto Politécnico de Coimbra
Administração de Saúde do Centro

INTERNAL ORGANIZATION



□ Geographical distribution of the IPCDVS members



6 Members
Instituto Politécnico de Castelo Branco
Universidade da Beira Interior

INTERNAL ORGANIZATION



□ Geographical distribution of the IPCDVS members



4 Members

Escola Superior de Educação João de Deus
Faculdade de Psicologia e de Ciências
da Educação da Universidade de Lisboa
Instituto S. João de Deus
Instituto Superior de Gestão de Lisboa

INTERNAL ORGANIZATION



□ Geographical distribution of the IPCDVS members

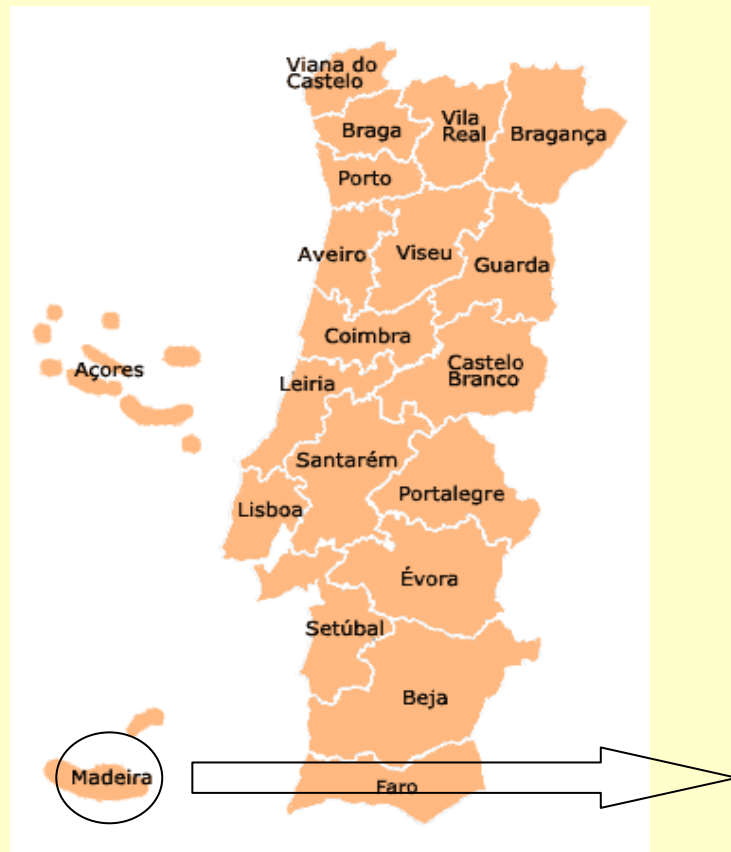


16 Members
Universidade do Algarve

INTERNAL ORGANIZATION



□ Geographical distribution of the IPCDVS members



3 Members
Universidade da Madeira

Organic entities:

- ❑ SCIENTIFIC COUNCIL (PH.D. MEMBERS)
- ❑ PRESIDENT OF THE BOARD OF RESEARCH: Maria Paula Paixão, Ph.D.
- ❑ SECRETARIES OF THE BOARD OF RESEARCH: Ana Cristina Almeida, Ph.D. & Joaquim Pires Valentim, Ph.D.
- ❑ BOARD OF DIRECTION (7 PH.D. LEVEL MEMBERS, PRINCIPAL INVESTIGATORS OF THE RESEARCH GROUPS)

INTERNAL ORGANIZATION



Unit Research Groups and Principal Investigators

Group Title	Principal Investigator
Relations, Development & Health	Maria Cristina Portocarrero Canavarro
Applied Cognitive and Social Psychology	Armando Mónica Oliveira
Cognition, Emotion, Learning and Career Development	José Manuel Tomás da Silva
Development, Education and Contexts of Intervention	Maria Teresa Mesquita de Sousa Machado
Health and Well Being in Educational and Professional Contexts	Saul Neves Jesus
Psychosocial Transitions in Developmental and Multicultural Systems: The Quest for Quality	Eduardo João Ribeiro dos Santos
Research Lines in Cognitive Neuroscience	Alexandra Isabel Dias Reis

ACOMPANNING COMMITTEE:

Étienne Mullet (École Pratique des Hautes Études, France)

Gualberto Buela-Casal (Universidad de Granada, Spain)

Karl Magnus Petersson (F.C. Donders Centre for Cognitive Neuroimaging, Radboud University Nijmegen, The Netherlands)

Martin Eisemann (University of Tromsø, Norway)

Pierre Barrouillet (University of Genève, Switzerland)

Vladimir Skorikov (University of Hawaii, USA)

Willy Lens (Katholieke University of Leuven, Belgium)

Viktor Sarris (University of Frankfurt, Germany)

Hélio-Carpintero (Universidad Complutense de Madrid, Spain)

INTERNAL ORGANIZATION



HONORIS MEMBERS:

Robert Lent (University of Maryland, USA)

Silvia Parrat-Dayan (Université de Genève, Suisse)

Jacques Montangero (Université de Genève, Suisse)

Secretariate:

Pedro Ricardo Belo dos Santos

João Pedro Azenha Beja Leitão

Rute David

Cátia Sofia Figueiredo

INTERNAL ORGANIZATION



❑ SCIENTIFIC COORDINATOR (brief presentation)

Eduardo J. R. Santos, Ph. D.

- *Associate Professor*, with definitive nomination, at the Faculty of Psychology and Educational Sciences of the University of Coimbra
- *Invited Adjunct Professor* at the Department of Education and Counseling Psychology, School of Education, State University of New York at Albany, USA
- *Fellow of the Brazilian Academy of Psychology*
- *International Liaison of the Division 52 (International Psychology)*, American Psychological Association
- *Member of the Editorial Board of The Counseling Psychologist* (2006 Impact Factor 2.675)
- *Editor of Psychologica* (journal of the FPCE UC)

- *Web of Science publications:*

Haase, R. F., Ferreira, J. A., Santos, E., Aguayo, G. M., & Fallon, M. M. (2008). Scaling the Information Load of Occupations: Preliminary Findings of the Fit Between Individual Capacities and Environmental Demands. *Journal of Career Assessment*, 16, 156-176. IF: 1.211

Ferreira, J. A., Santos, E., Fonseca, A. C., & Haase, R. F. (2007). Early Predictors of Career Development: A Ten-Year Follow-Up Study. *Journal of Vocational Behavior*, 70, 61-77. 2006 IF 2.263

Haase, R. F., Ferreira, J. A., Santos, E., Aguayo, G. M., & Fallon, M. M. (in press). Scaling the Information Load of Occupations: Preliminary Findings of the Fit Between Individual Capacities and Environmental Demands. *Journal of Career Assessment*. 2006 IF 1.211

Santos, E., & Ferreira, J. A. (1998). Career Counseling and Vocational Psychology in Portugal: A Political Perspective. *Journal of Vocational Behavior*, 52, 312-322. 2006 IF 2.263

Santos, E., Ferreira, J. A., & Chaves, A. (2001). Implications of Sociopolitical Context for Career Service Delivery. *The Career Development Quarterly*, Vol. 50, 1, 45-55. 2006 IF1.000

Oliveira, A., Fonseca, I., Teixeira, M., & Santos, E. J. R. (2005). Oddball versus free-context ERP paradigms in evaluative tasks: common findings and paradigm-dependent effects. *Psychophysiology*, Vol. 42, S97. IF: 3.159

Oliveira, A. M., Fonseca, I. B., Cardoso, F. M., Teixeira, M., & Santos, E. J. R. (2003). Event-related brain potentials within an extended affective/evaluative oddball paradigm. *Journal of Psychophysiology*, 17 (2), 109. IF: 1.634

STRATEGIC DEVELOPMENT PLAN:



After the sealing of the Report for FCT (**period 2003-2006**), now under evaluation, for the period **2007-2010**, IPCDVS, considering its transdisciplinary logic, national geographical dimension and level of internationalization, has as main strategy the harmonization of a sustainable development plan, wherein both sides of expansion, and deepening/specialization should be articulated.

These two components will be operationalized through the implementation of action plans that should envision the attainment of the following goals:

- 1. Implementation of innovative scientific researches fairly structured according to the most international community valued conceptual and methodological parameters.**
- 2. Adhesion of “critical mass” (new excellent researchers).**

STRATEGIC DEVELOPMENT PLAN:



3. Growing of the internationalization of research/post-graduate training.
4. Publication of the ongoing research in national and international journals.
5. Production of scientific and professional materials (e.g., manuals, psychological assessment materials, software, etc.).
6. Organization of international scientific events in top domains.
7. Organization of post-graduate programs leading to the training of new Master and Doctoral students.
8. Continuing specialized training open to the scientific and professional community.
9. Increasing of researchers mobility and interchange programs.
10. Partnerships with other national and international research and development units.
11. Organization of integrative and multidisciplinary activities and nets, namely through the establishment of agreements with professional and scientific institutions from the national and international community.

STRATEGIC COMMUNICATION



In order to improve the strategic communication levels (internal and external) a new site is being developed. From this site, we would like to highlight the following features:

- ☑ ELECTRONICAL ARCHIVE SINCE 1994 TO 2006
- ☑ ELECTRONICAL FORUM
- ☑ ELECTRONICAL NEWS AND AGENDA
- ☑ ELECTRONICAL VOTE
- ☑ LINKS TO ASSOCIATED SITES
- ☑ E- JOURNAL: *PSYCAWARE*

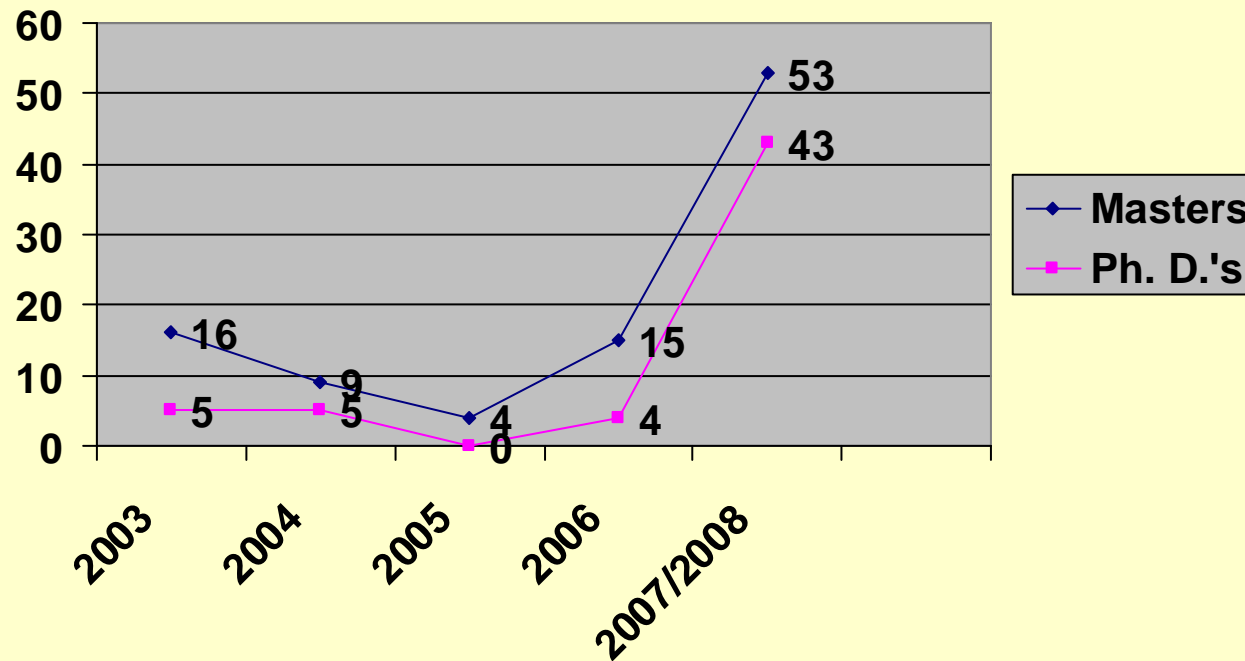
This site is organized according to the International norms of the Web Acessibility.



New Site for 2007-2010

<http://www.ci.uc.pt/ipc/2007-2010/>

Master and Doctoral Students associated to IPCDVS

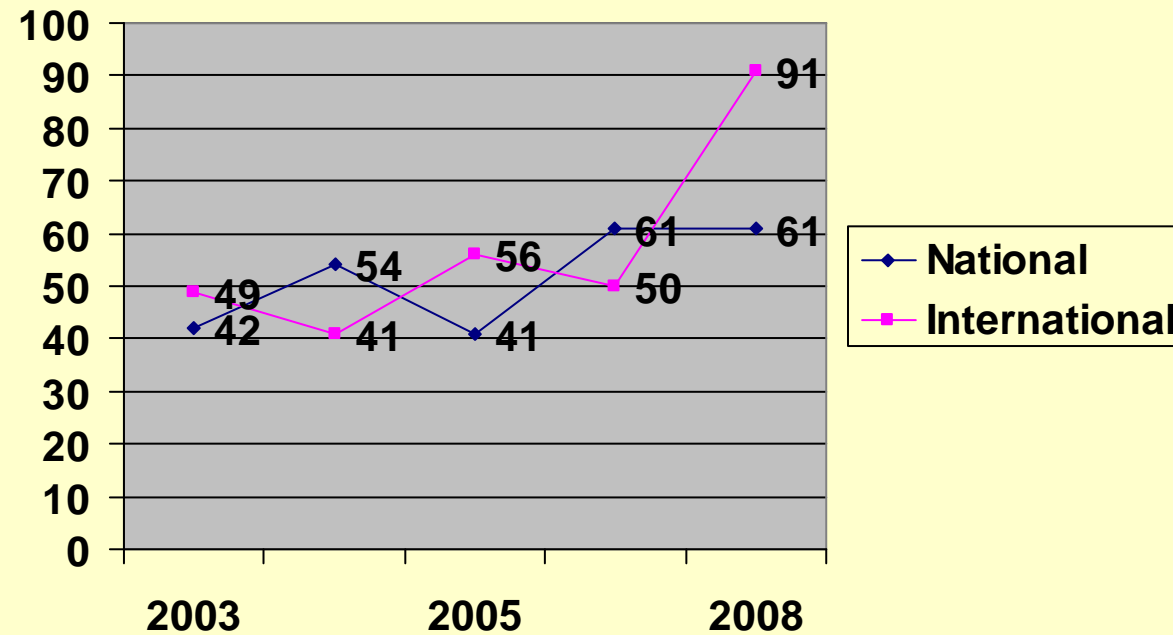


**OBS.: IN THESE NUMBERS WE ARE NOT COUNTING MASTER THESES IN THE BOLOGNA
FORMAT.**

EVOLUTION OF THE NUMBER OF PRESENTATIONS LISTED IN 2003-2008



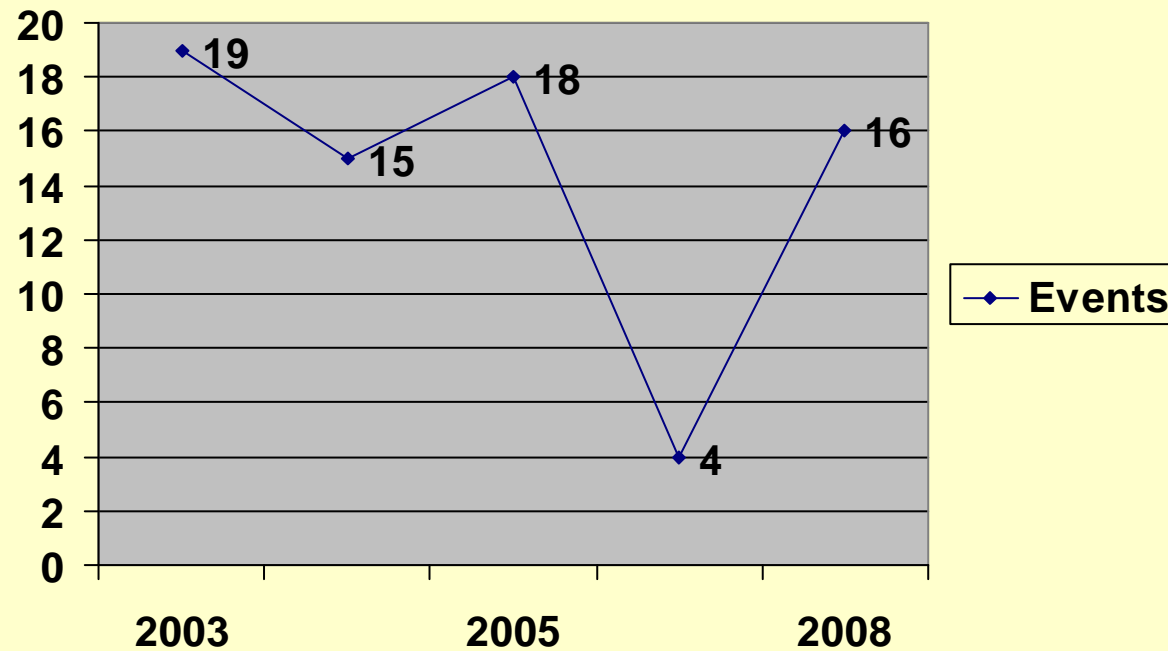
National and International Presentations



EVOLUTION OF THE NUMBER OF SCIENTIFIC EVENTS ORGANIZED IN 2003-2008



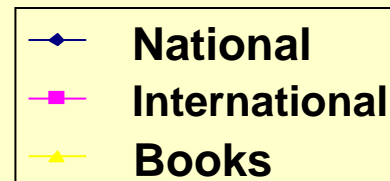
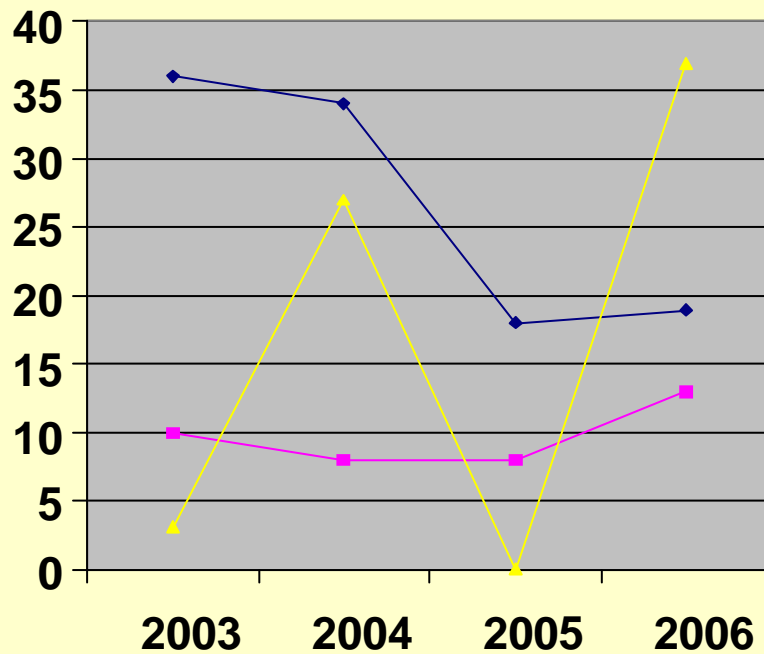
Scientific Events



EVOLUTION OF THE NUMBER OF PUBLICATIONS LISTED IN 2003-2008



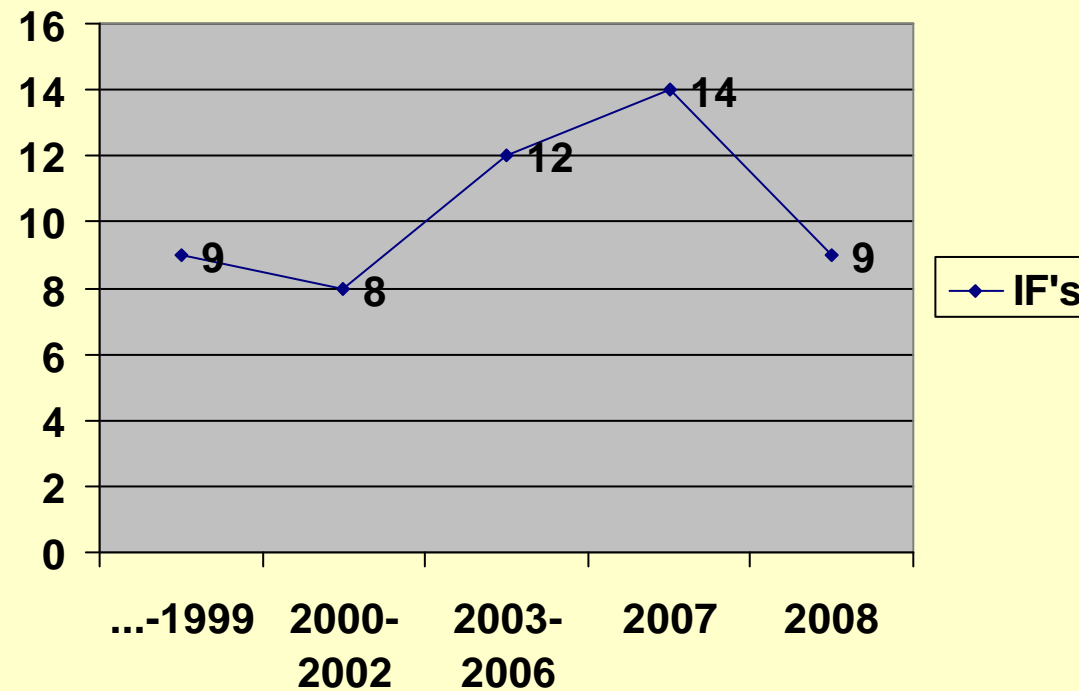
Publications on National/International Journals and Books/Chapters



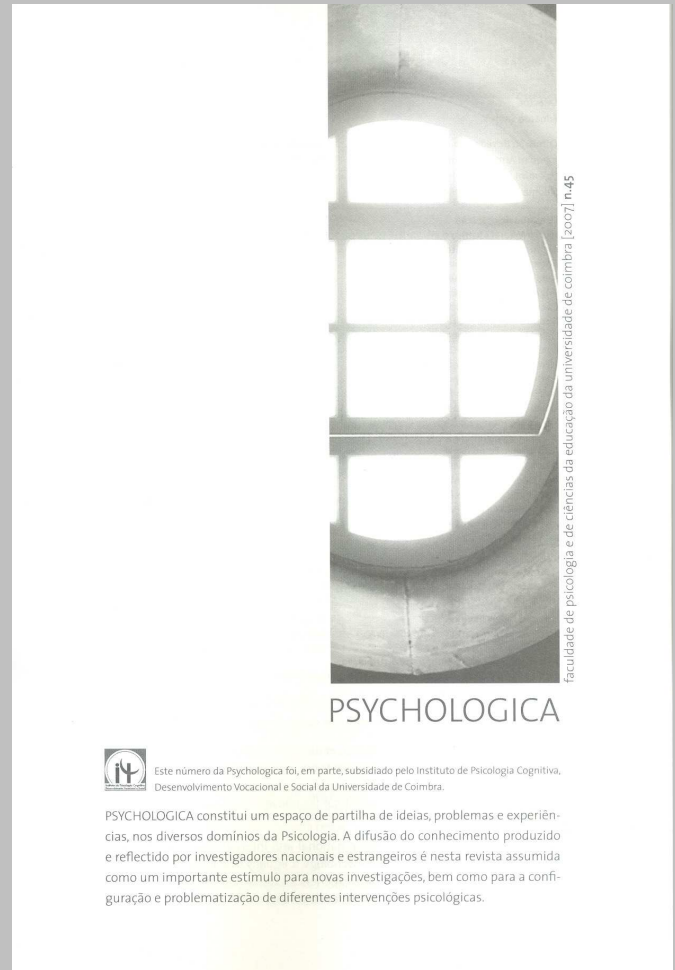
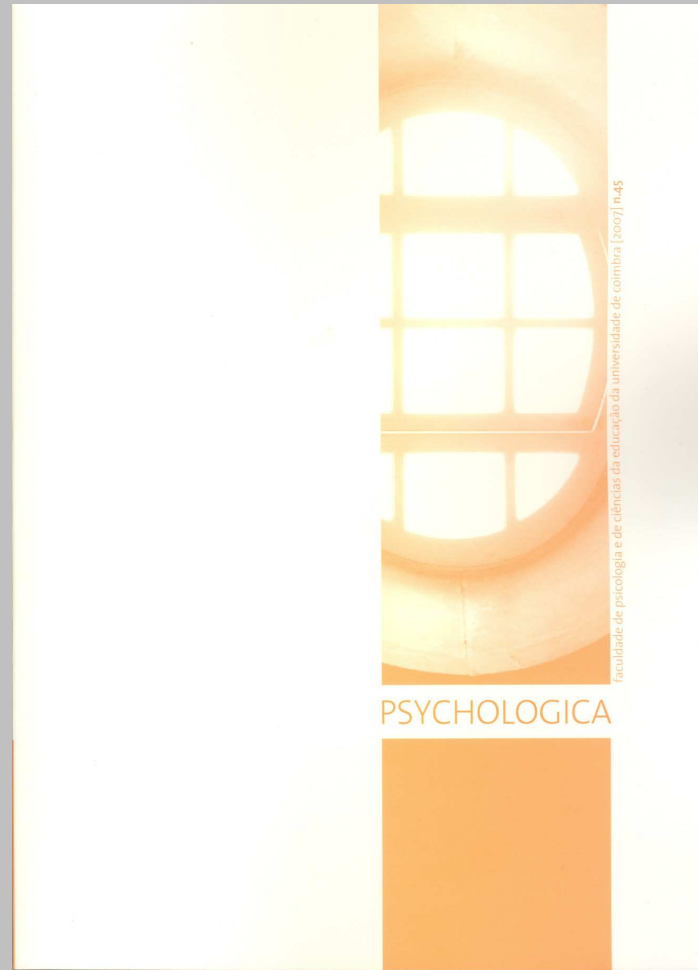
EVOLUTION OF THE NUMBER OF PUBLICATIONS LISTED IN THE WEB OF SCIENCE 2003-2008



Impact Factor



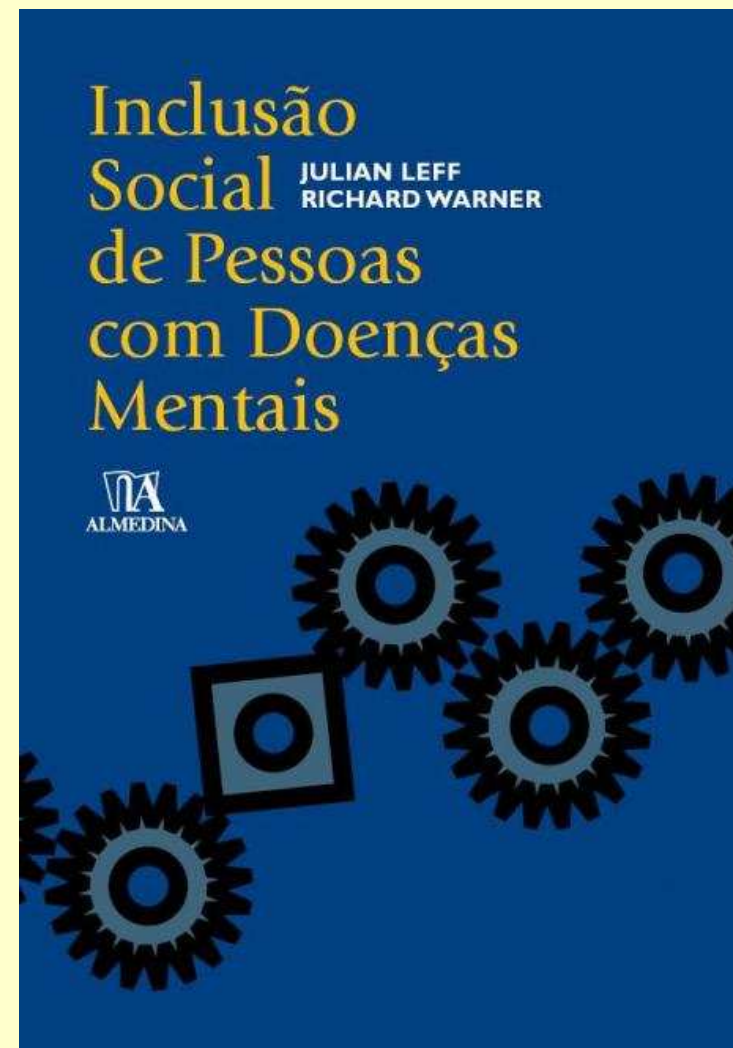
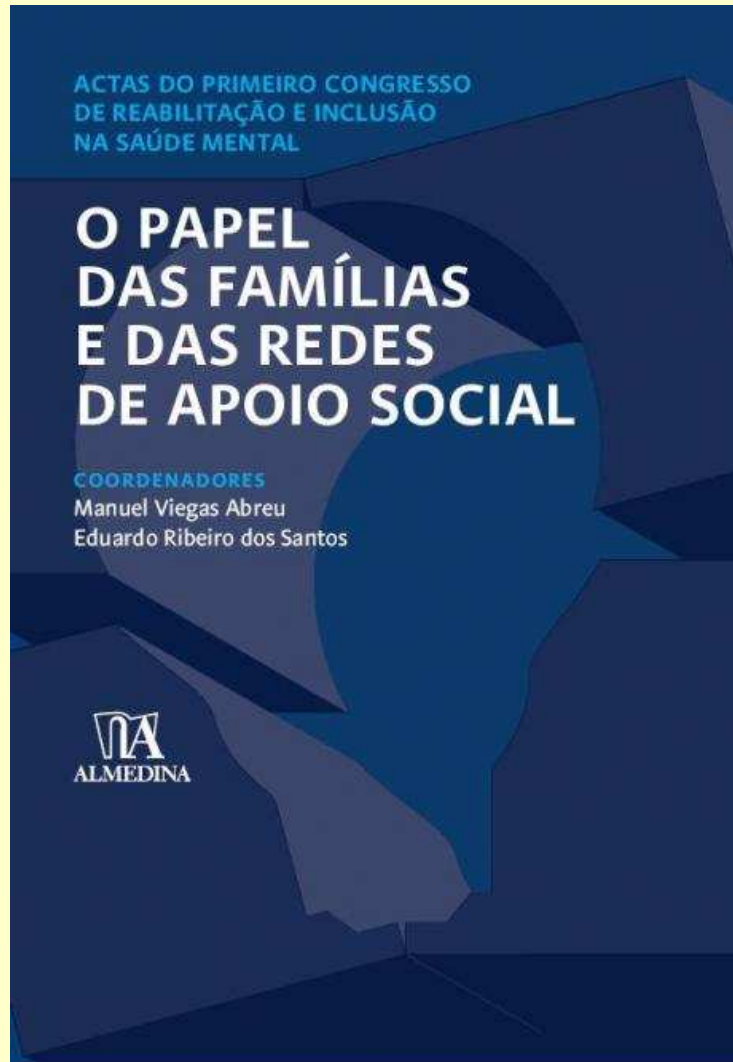
IPCDVS SUPPORT TO SCIENTIFIC JOURNALS



Este número da Psychologica foi, em parte, subsidiado pelo Instituto de Psicologia Cognitiva, Desenvolvimento Vocacional e Social da Universidade de Coimbra.

PSYCHOLOGICA constitui um espaço de partilha de ideias, problemas e experiências, nos diversos domínios da Psicologia. A difusão do conhecimento produzido e reflectido por investigadores nacionais e estrangeiros é nesta revista assumida como um importante estímulo para novas investigações, bem como para a configuração e problematização de diferentes intervenções psicológicas.

PUBLISHED BOOKS SUPPORTED BY IPCDVS



SCIENTIFIC EVENTS ORGANIZED
BETWEEN January 2008
(ELECTRONICAL SEALING OF THE FCT REPORT)
AND June 2009



-1st Cycle of Scientific Events of the IPCDVS (4 Workshops)

[Prof. Robert McCaffrey; Prof. Angela Almeida; Prof. Dario Spinni; Developmental Psychology Workshop];

-International Congress “ Cities, Safety and Health”

2008

2009

- Seminar "Living Systems Framework“

Prof. Fred Vondracek - Penn State University, USA & Prof. Matthias Reitzle - Jena University, GE [3rd April]

-Seminar "Research and Publish: Guidelines for International Diversity“

Prof. Nadya Fouad, Wisconsin University [22nd May];

- Workshops:

"Introduction to Regression & Correlation Analysis" [8th May];

"Use of Multiple Regression in Counseling Psychology Research: A Flexible Data-Analytic Strategy" [9th May]

Prof. Richard Haase – SUNY, USA

-Psychology, Peace and Spirituality: Video-Conference

Prof. Larry Gerstein - Ball State University, IN, USA [27th May]

ONGOING ACTIVITIES – “*Compromisso com a Ciência 2008*”



❑ **Experimental Psychology**
Alba Grieco (University of Padua, Italy)

Selection committee:

Étienne Mullet (University of Charles-de-Gaulle - Fr)
Viktor Sarris (University of Frankfurt - Germ)
Michel-Ange Amorim (University of Paris - Fr)
Armado Machado (University of Minho - Pt)

❑ **Clinical Psychology**
Carla Crespo Victoria (University of Wellington, NZ)

Selection Committee:

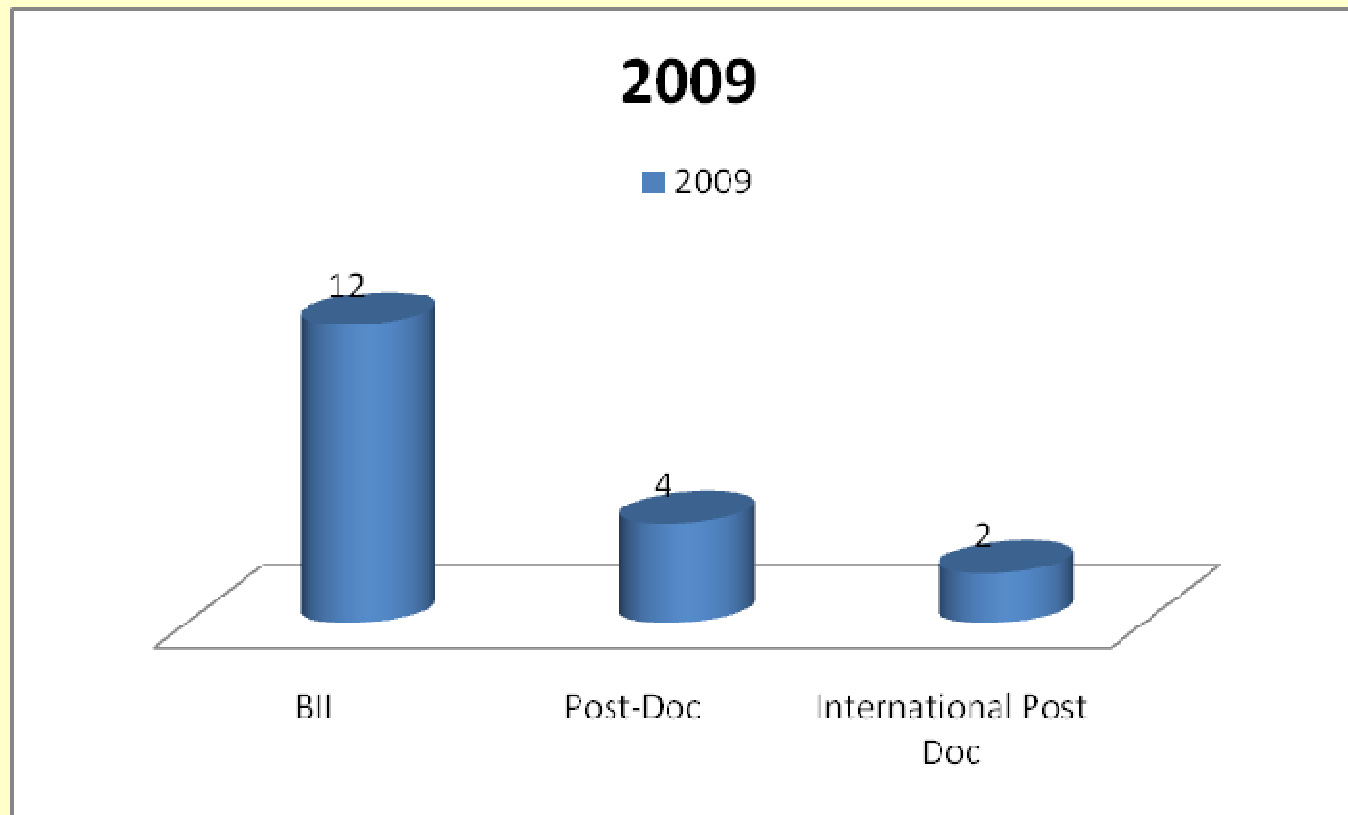
Maria Cristina Canavarro (University of Coimbra - Pt)
Martin Eiseman (University of Tromso - Nor)
Luísa Barros (University of Lisboa - Pt)
Gualberto Buela-Casal (University of Granada - Sp)

International Post – Doc
September 2009 – September 2014

Protocols to be signed in 2009:

- With the Laboratoire Santé, Individu et Société, Université Lyon 2, France: agreement on research and development activities within the domains of handicap and gerontology;**
- IFR – Instituto de Formação Rodoviária (Formation in Traffic Psychology);**
- Note: Other protocols are in the initial stage of preparation, namely with institutions from South-America.**

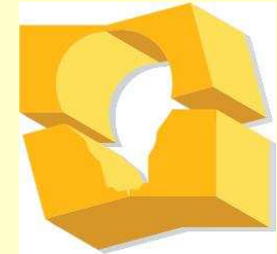
BII, Post-Doc and International Post-Doc



FORECASTED SCIENTIFIC EVENTS FOR 2009 (until October)



- ❑ II Congress Mental Health and Rehabilitation (October 12-14)



- ❑ *Seminar with Prof. David Blustein & Prof. Maria Coutinho (Boston University - USA) – July 2009*

FORECASTED SCIENTIFIC EVENTS FOR 2009 (until October)



Thank you for your attention.

The End.